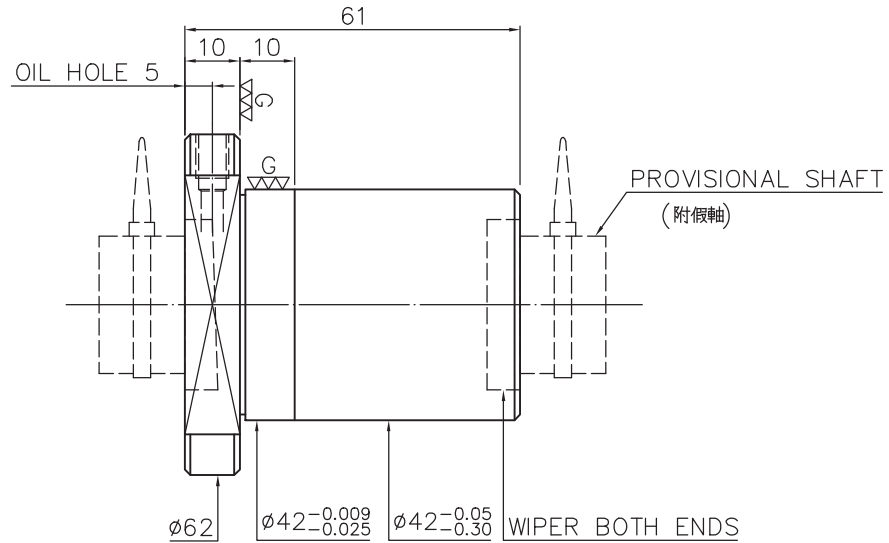
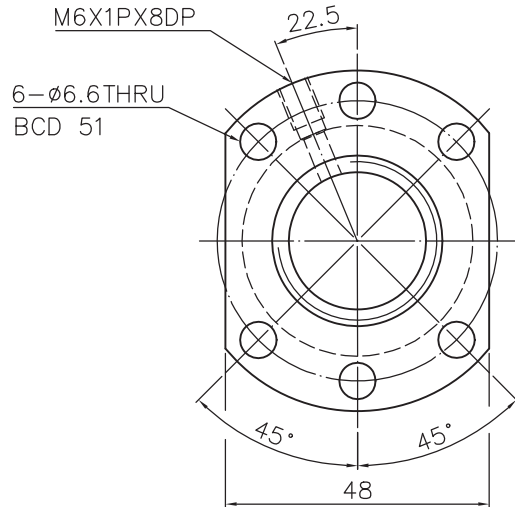


www.hiwin.com.ru



PRELOAD(kgf)	~
R.D	~
S.F (kgf)	~
DRAG TORQUE(kgf-cm)	~
DIRECTION OF TURN	R
PC DIA.	25.1
BALL DIA.	3.175
BACKLASH	~
CIRCUIT	4
LEAD ANGLE	7.23
DYNAMIC (kgf)	~
STATIC (kgf)	~
LEAD	10

SPEC:R25-10K4-FSC

MAX. AXIAL LOAD (kgf)		LUBRICATION		BALL DIA.	3.175
MAX. ROTATIONAL SPEED (rpm)		SPACE BALL		BACKLASH	~
DN VALUE		E1 TYPE ASSEMBLY METHOD		CIRCUIT	4
MAX. FEED RATE (m/min)		CUSTOMER DRAWING NO.		LEAD ANGLE	7.23
ACCELERATION (m/sec <sup>2</sup> )		CUSTOMER MC TYPE		DYNAMIC (kgf)	~
SUPPORT METHOD		CUSTOMER AXIAL TYPE		STATIC (kgf)	~
				LEAD	10

	UNCHAMFERED USE <input type="checkbox"/> R0.5 <input checked="" type="checkbox"/> R1 <input type="checkbox"/> R ROUGH M/C FIN M/C GRD	SCALE 1: X MATERIAL SH: ROLLED DATE 2006.04.24 NT: SNCM220 DWG 張羽沛
	UNTOL DIMN mm UP TO 6 30 120 300 600 1200 OVER ±0.1 ±0.2 ±0.3 ±0.4 ±0.5 ±0.8 ±1.0 ±1.5	THREAD BALL TRACK APPD 吳秋燕 HRC 56 ~ 62 PROCESS NO. G
CUSTR HIWIN		DWG.NO.

\*BREAK SHARP EDGE UNLESS OTHER SPECIFIED.  
 \*未畫倒角者以R0.5MAX  
 ● THREAD END ALLOWS ABOVE LENGTH OUT OF HARDNESS TOLERANCE

DATE	MODIFICATION	APPROVED
------	--------------	----------

\* PLEASE IGNORE CHINESE CHARACTERS WHICH ARE FOR OUR REFERENCE ONLY.