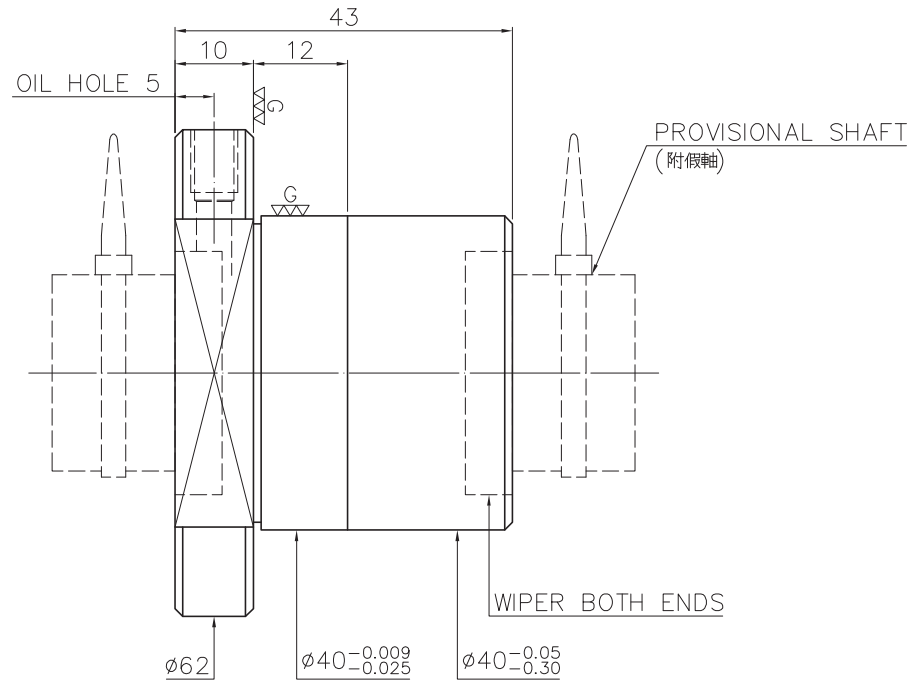
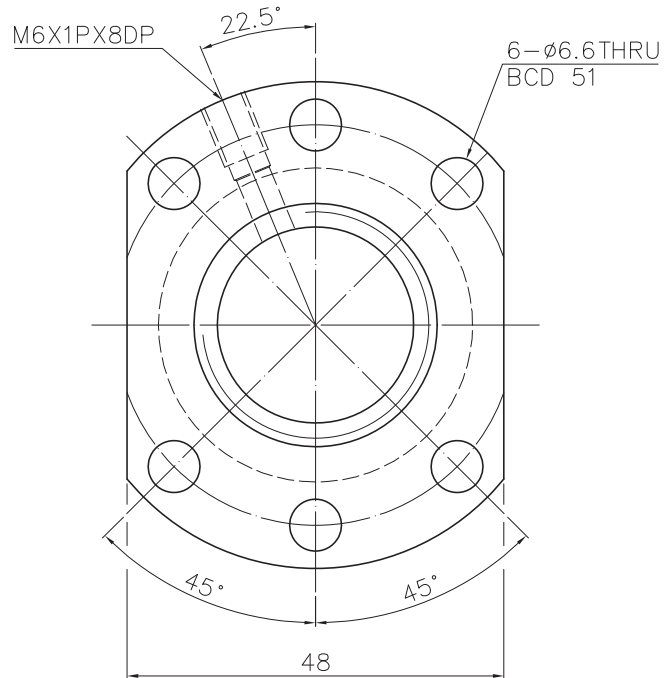


Released by HIWIN design group.

www.hiwin.com.ru



PRELOAD(kgf)	~
R.D.	~
S.F. (kgf)	~
DRAG TORQUE(kgf-cm)	~
DIRECTION OF TURN	R
P.C. DIA.	25.57
BALL DIA.	3.175
BACKLASH	0.04MAX
CIRCUIT	4
LEAD ANGLE	3.56
DYNAMIC (kgf)	1490
STATIC (kgf)	4150
LEAD	5

SPEC:R25-5K4-FSC

MAX. AXIAL LOAD (kgf)		LUBRICATION		BALL DIA.	3.175
MAX. ROTATIONAL SPEED (rpm)		SPACE BALL		BACKLASH	0.04MAX
DN VALUE		E1 TYPE ASSEMBLY METHOD		CIRCUIT	4
MAX. FEED RATE (m/min)		CUSTOMER DRAWING NO.		LEAD ANGLE	3.56
ACCELERATION (m/sec <sup>2</sup> )		CUSTOMER MC TYPE		DYNAMIC (kgf)	1490
SUPPORT METHOD		CUSTOMER AXIAL TYPE		STATIC (kgf)	4150
				LEAD	5

<p>THREAD LENGTH</p> <p>He H ep</p> <p><math>v_{300p}: \sim</math></p> <p>ep: <math>\sim</math></p>	UNCHAMFERED USE <input type="checkbox"/> C0.5 <input checked="" type="checkbox"/> C1 <input type="checkbox"/> C SCALE 1: X ROUGH M/C FIN M/C GRD $\nabla$	MAT. SH: ROLLED DATE 2011.05.30 NT: SNCM220/Equivalent DWG Ford THREAD BALL TRACK CHK Sting HRC 56 ~ 62 APPD Cody
	NORMAL TOLERANCE mm UP TO 6 30 120 300 600 1200 2400 OVER TO $\pm$ 0.1 $\pm$ 0.2 $\pm$ 0.3 $\pm$ 0.4 $\pm$ 0.5 $\pm$ 0.8 $\pm$ 1.0 $\pm$ 1.5	CUSTR <b>HIWIN STD.</b> DWG.NO.

\*BREAK SHARP EDGE UNLESS OTHER SPECIFIED.  
\*未畫倒角者去毛邊 (CO.2MAX)  
● THREAD END ALLOWS ABOVE LENGTH OUT OF HARDNESS TOLERANCE.

\* PLEASE IGNORE CHINESE CHARACTERS WHICH ARE FOR OUR REFERENCE ONLY.

DATE	MODIFICATION	APPROVED
------	--------------	----------